



NARESUAN UNIVERSITY

University For Entrepreneurial Society



Naresuan University (NU), established in 1990 in Phitsanulok province, Thailand, is a comprehensive university with over 27,000 full-time students and 5,000 staff in 22 faculties, a demonstration school and a hospital. As a public university, NU emphasizes the improvement of educational opportunity and equity for all, positions itself as a university for an entrepreneurial society and places a strong focus on research, innovation, partnership, and internationalization. NU's five key areas for research are Food, Health & Medicines, Energy & Low-carbon Society, Sustainable Tourism, and Logistics & Supply Chain.

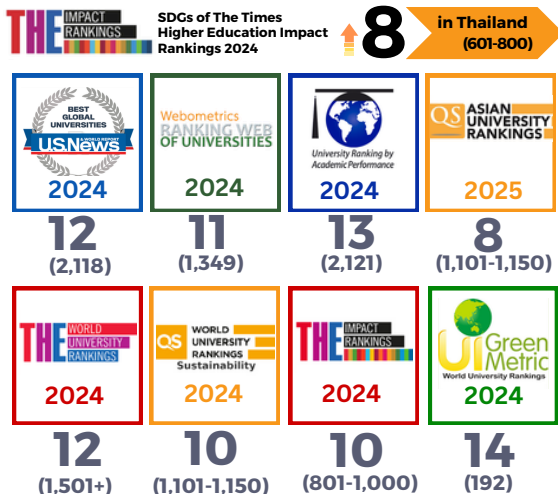


FIGURES:

Students	27,000+
Academic Staff	1,500+
Supporting Staff	3,400+
Undergraduate Programs	80+
Graduate Programs	150+

UNIVERSITY RANKINGS:

in Thailand



FACULTIES, COLLEGES AND SCHOOLS

Health Sciences Cluster

- Allied Health Sciences
- Dentistry
- Medical Science
- Medicine
- Nursing
- Pharmaceutical Sciences
- Public Health

Social Sciences Cluster

- Education
- Humanities
- Law
- Business Economics and Communications
- Social Sciences

Science & Technology Cluster

- Agriculture, Natural Resources & Environment
- Architecture, Art and Design
- Engineering
- Science
- Logistics and Digital Supply Chain
- Renewable Energy Technology
- Fundamental Study

Others

- Graduate School
- NU International College

NU Website



International Student Booklet



+66 5596 1640



<https://english.nu.ac.th/>



international@nu.ac.th



STUDY PROGRAMS FOR INTERNATIONAL STUDENTS

Bachelor's Degrees

Naresuan University International College

- B.B.A. in International Human Resource Management And Development (IHRMD)
- B.B.A. in Event, Hotel and Tourism Management (EHTM)
- B.B.A. in International Business Management (IBM)
- B.B.A. in English for Business Communication (EBC)

→NUIC Website



Faculty of Engineering

- B.Eng. in Intelligent Innovation Engineering

→Faculty of Engineering



Graduate Degrees

- M.S. in Disaster Management
- M.A. in ASEAN Studies
- Ph.D. in ASEAN Studies
- Others

→Graduate Degrees



ACADEMIC CALENDAR

Activities	Semester 1	Semester 2	Summer
Registration period	Early June	Early November	Mid - March
Classes begin	Mid-June	Late November	Early April
* Midterm exam period	Mid - August	Early January	-
Final exam period	Mid - October	Mid-March	Late May
Semester break	Late October - Mid - November	Late March - Early April	Early June - Mid - June

* The midterm exam period is applied for undergraduate students only.

TUITION FEES

Fees	Expenses/ Semester		
	Bachelor's Degree (4 yrs.)	Master's Degree (2 yrs.)	Doctoral Degree (3 yrs.)
Tuition Fee	15,000 - 50,000 Baht	20,000 - 76,600 Baht	25,000 - 100,000 Baht
International Student Fee	7,500 Baht	7,500 Baht	7,500 Baht
University Fee	1,100 Baht	1,100 Baht	1,100 Baht

*34.36 Baht = 1 USD

4.87 Baht = 1 CNY

(as of August 2024)



+66-5596 1640



<https://english.nu.ac.th/>



international@nu.ac.th